

Emergency Communications

How can you be PREPARED?

Have a Plan



Family First!

Are they Safe

Food

Water

Medicine

MONEY

Have a Plan



Generators

Gas

Flashlights

Batteries

Radios

Ask Yourself



How are you going to get information

How are you going to talk

Who are you going to talk to

What repeaters or simplex

Radios pre-programmed

How can you help



Do you Evacuate

Do you go to a shelter

Are you able to volunteer

Shelter or Municipal EOC

What EM-ACS can supply



Shelter Radio Kit

FTM-6000

Power Supply

Roof Mounted Antenna

Laptop – DRA (for WinLink)

What EM-ACS can supply



Additional EM-ACS Resources



Command Runners. (6 units available)

- a. Deployable unit that contains Radio communications equipment.
- b. The radios in this unit are capable of the following modes.
 - i. Amateur Radio UHF-VHF and HF
 - ii. Marine radio communications
 - iii. Digital Mobile Radio (DMR)
 - iv. P-25 700-800Mhz (currently programmed on the Pinellas County System).
 - v. UHF National Interoperability
 - vi. VHF National Interoperability
- c. The units are self-contained and can work off either of the following.
 - i. Shore Power
 - ii. Battery
 - iii. Gas Generator (Self-Contained, approx. 3 hrs. runtime) to power Command Runner and small devices such as a laptop.
- d. Built-in PC capabilities to connect to the internet (for example WebEOC)
 - i. Provided there is wireless connectivity.
- e. The unit also can provide small area (300 yards) wireless internet and wireless cell calling (must have a wireless capable phone) using a cradle point modem.

Additional EM-ACS Resources



Additional EM-ACS Resources



SatRunners (2 units available)

- a. These units are deployable Cellular units capable of providing cellular coverage of approximately 2-3 miles depending on location and surrounding terrain. This is independent of existing cellular infrastructure. Requires 2" class III hitch to transport.
 - i. Pinellas EM has two (2) units.
 - ii. SAT #1 will provide AT&T FirstNet Cellular service and wireless cell calling. (Must have a wireless capable phone).
 - iii. SAT #2 Can provide AT&T FirstNet and Verizon Cellular and wireless cell calling (must have a wireless capable phone).
- b. The unit also has the capability of providing small area (300 yards) wireless internet coverage using a cradle point modem.
- c. The units are self-contained with the availability of working off either of the following.
 - i. Shore Power
 - ii. Battery
 - iii. Gas Generator (Self-Contained) approx. run time with external tank 60 hrs. Powers SatRunner only.
 - iv. External fuel tank (6 gallon)

Additional EM-ACS Resources



Additional EM-ACS Resources



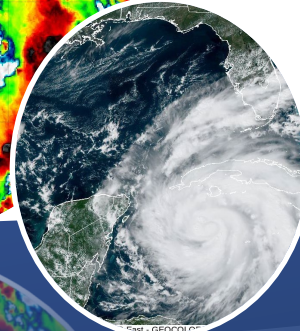
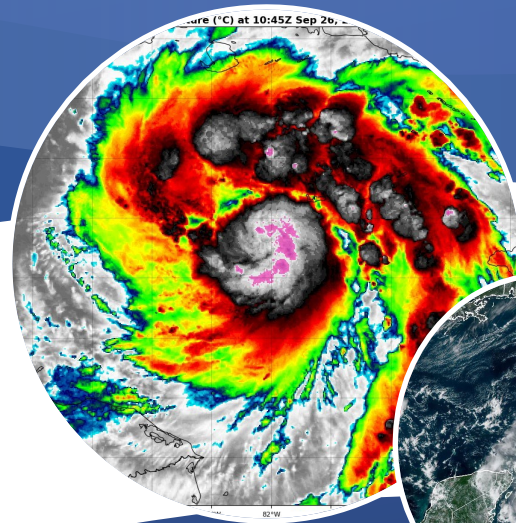
Portable Starlink Unit (2 available)

- a. Portable Starlink unit capable of providing internet connectivity using the Starlink Low Earth Orbit (LEO) satellite system.
- b. The unit can provide high-speed internet connectivity via wireless or ethernet connectivity.
- c. Unit can also provide wireless cellular calling if your phone is capable.
- d. The units require 120-volt AC power which can be provided by existing building power or by an external 12-volt source using the unit's inverter.
- e. Can be used to provide connectivity to VOIP Phonebank.

Additional EM-ACS Resources



Questions



Thank you for your time!